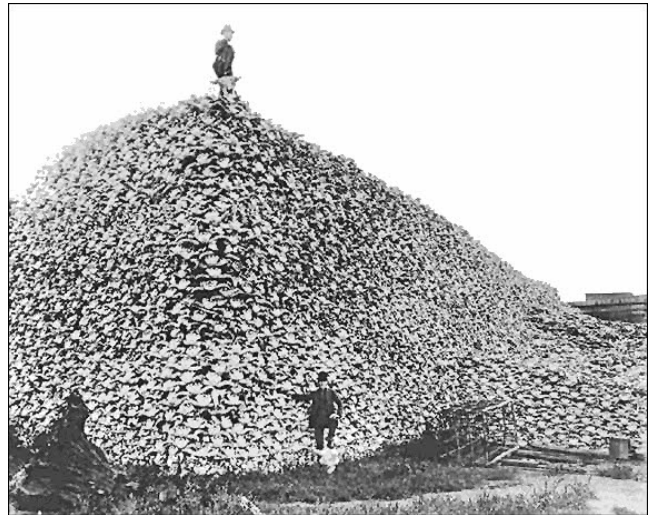


CGR4M0 Grade 12 Environmental and Resource Management  
**Our Interactions with the Environment – Part 3: The International Level**

The concern about the elimination of animal and plant species is rooted in the notion that biodiversity is desirable and required for the maintenance and evolution of species. When humans began their exploration of the world outside Europe in the 15<sup>th</sup> century, a great variety of plant and animal species were discovered. The number of some of these species was also great. The passenger pigeon, for example, at one time was one of the most common birds in North America, with an estimated population of five billion. Within a few centuries, through over hunting, the bird became extinct. Had it not been for conservation methods that were enacted in the late 19<sup>th</sup> century, the same fate would have occurred to the American Bison among other species.



These men are standing on/beside a mound of bison skulls.

Research one of the species from the list below and create a “fact sheet” that outlines the following information:

- Description
  - Signs and sounds
  - Habits
  - Unique characteristics
- Distribution
  - Habitat
  - Range
- Feeding
- Breeding
- Conservation
  - Population
  - Threats
  - Protection
  - Recovery initiatives
- A list of resources used in researching the topic

Endangered species list:

- |                             |                           |                                     |
|-----------------------------|---------------------------|-------------------------------------|
| a. Aye-Aye                  | j. Indian Python          | s. Silky Sifaka                     |
| b. Sneezing Monkey          | k. Komodo Dragon          | t. Red River Giant Softshell Turtle |
| c. Black Rhinoceros         | l. Leatherback Sea Turtle | u. Mulanje Red Damsel               |
| d. Black-footed Ferret      | m. Mountain Gorilla       | v. Gray Whale                       |
| e. Red-finned blue eye fish | n. Black Lemur            | w. African Gray Parrot              |
| f. Florida Manatee          | o. Short-Tailed Albatross | x. Orangutan                        |
| g. Giant Otter              | p. Abor Bug-eyed Frog     | y. Moominia willii                  |
| h. Sakhalin Taimen          | q. Spoon-billed Sandpiper | z. Dwarf Crocodile                  |
| i. Humboldt Penguin         | r. Pygmy Sloth            |                                     |

## Endangered Species Fact Sheet

Categories	Level 1 (50 - 59%)	Level 2 (60 - 69%)	Level 3 (70 - 79%)	Level 4 (80 - 100%)
<p><b>Knowledge and Understanding</b> -provides appropriate and sufficient geographic evidence and well-reasoned arguments to support opinions and conclusions <b>GI2.09</b></p>	- provides appropriate and sufficient geographic evidence and well-reasoned arguments with limited success.	- provides appropriate and sufficient geographic evidence and well-reasoned arguments with some success.	- provides appropriate and sufficient geographic evidence and well-reasoned arguments with considerable success.	- provides appropriate and sufficient geographic evidence and well-reasoned arguments with a high degree of success.
<p><b>Thinking</b> - explains the complexity of how human survival is linked to the components of the biosphere <b>HE1.01</b></p>	- explains the complexity with limited success	- explains the complexity with some success	- explains the complexity with considerable success	- explains the complexity with a high degree of success
<p>- explain the impact of selected land use practices on human and natural systems <b>HE2.02</b></p>	- explains the impact of land use practices with limited success	- explains the impact of land use practices with some success	- explains the impact of land use practices with considerable success	- explains the impact of land use practices with a high degree of success
<p>- explain how factors and processes determine the distributions and availability of resources <b>HE2.04</b></p>	- limited explanation is provided about how factors and process determine the distribution and availability	- some explanation is provided about how factors and process determine the distribution and availability	- considerable explanation is provided about how factors and process determine the distribution and availability	- thorough explanation is provided about how factors and process determine the distribution and availability
<p><b>Communication</b> - uses appropriate terminology when communicating <b>GI3.03</b></p>	- communicates the results of inquiries, using appropriate terms and concepts with limited success.	- communicates the results of inquiries, using appropriate terms and concepts with some success	- communicates the results of inquiries, using appropriate terms and concepts with considerable success.	- communicates the results of inquiries, using appropriate terms and concepts with a high degree of success.
<p><b>Application</b> - analyse ways in which human activities alter the natural environment <b>HE2.01</b></p>	- limited analysis of the ways that activities alter the environment is provided	- some analysis of the ways that activities alter the environment is provided	- considerable analysis of the ways that activities alter the environment is provided	- thorough analysis of the ways that activities alter the environment is provided